

ZC24A34 Series

ELECTRIC HEAT SEQUENCERS

HEATER-SWITCH ACTIONS AND CONFIGURATIONS

The ZC24A34-5 (reference Figure 7) utilizes two bi-metal discs in conjunction with one SPST and one DPST switch action to achieve two independent timings. The ZC24A34-6 (reference Figure 8) utilizes two bi-metal discs in conjunction with two DPST switch actions to also achieve two independent Timings. This configuration can be automatically reset, and built to close three or four sets of contacts on temperature rise within a specified time range.

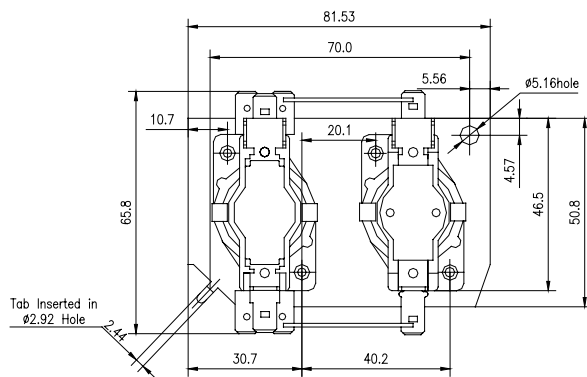


Figure 7

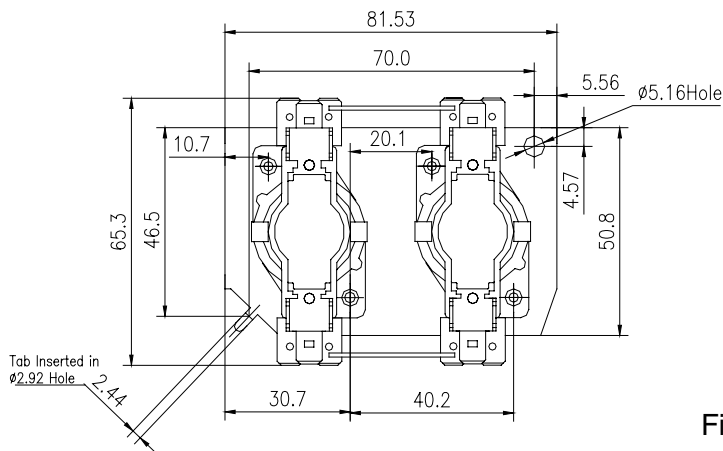
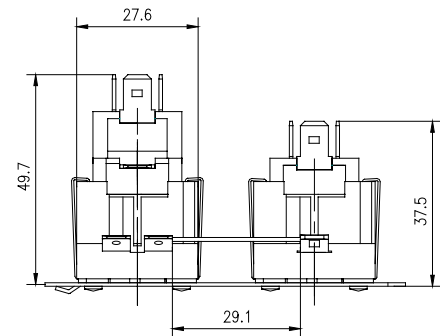
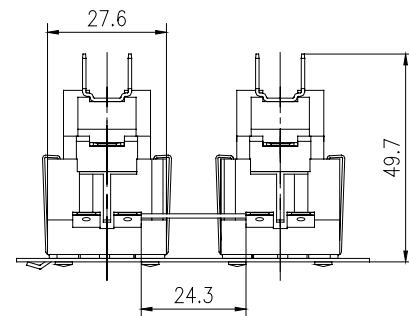


Figure 8



ZC24A34 Series

ELECTRIC HEAT SEQUENCERS

HEATER-SWITCH ACTIONS AND CONFIGURATIONS

The ZC24A34-14 (reference Figure 9), utilizes four bi-metal discs in conjunction with one SPST and two DPST switch actions to achieve four independent Timings. This configuration can be automatically reset, and built to close five sets of contacts on temperature rise within a specified time range.

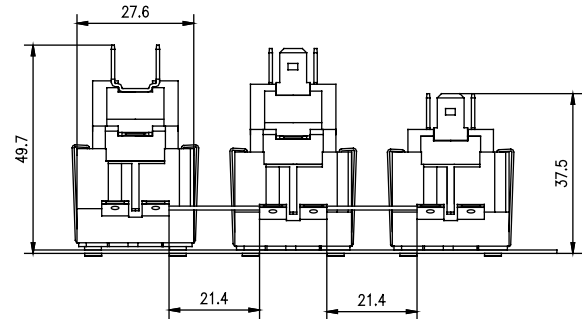
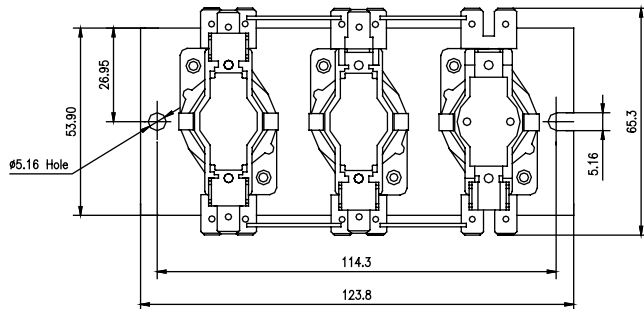


Figure 9

TERMINALS

Standard terminal types are listed below. Special switch terminals such as double quick connects and female quick connects may be available for a specific switch terminal. Consult sales for details.

SWITCH TERMINALS

1. Solder type
2. Screw type - 0.250" x 0.032" (6.35 x 0.81mm) Q.C.

HEATER-SWITCH ACTIONS AND CONFIGURATIONS

Standard heater terminals are 15° 0.250" x 0.032 (6.35 x 0.81mm), double brass male quick connects. The stage terminals are tin-plated brass.

1. Solder type
2. Screw type-0.250" x 0.032" Q.C (Double Q.C terminals available at additional cost)
Use 12 gauge or larger wire for loads greater than 15 amperes.

ZC24A34 Series

ELECTRIC HEAT SEQUENCERS

HEATER-SWITCH ACTION AND CONFIGURATION

The ZC24A34-15 (Figure10) utilizes a single bi-metal disc in a single pole double throw configuration. The SPDT switch action allows for a single set of timings. Mainly used in heat pump air handlers by providing a delay to the blower motor in cooling mode.



(ZC24A34-15)

STANDARD TIMINGS

Model Number	Timings	Switches	ON Timing	OFF Timing
ZC24A34-15	1	1	1-25	65-115

ELECTRICAL RATINGS

VAC	N.O. Contacts - Terminals 1, 3					N.C. Contacts - Terminals 1, 2			UL Endurance Cycles
	Non-Inductive (Resistive)		Inductive (Motor)		Pilot Duty (VA)	Non-Inductive (Resistive)		Pilot Duty (VA)	
	Amps	Watts	FLA	LRA		Amps	Watts		
120	25	3000	14	72	125	10	1200	125	30K
240	25	6000	7	42	125	5	1200	125	
480	25	6000	3	18	480	-	-	-	

MECHANICAL DATA

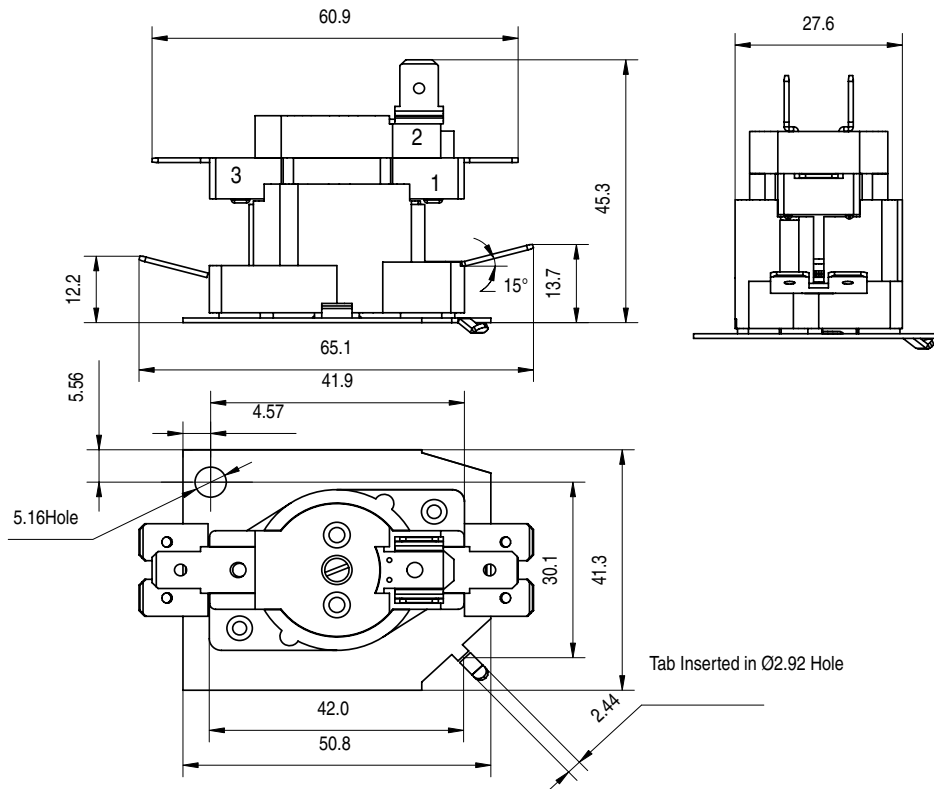


Figure 10